

FCC Information and Copyright

This equipment has been tested and found to comply with the limits of a Class B digital device, pursuant to Part 15 of the FCC Rules. These limits are designed to provide reasonable protection against harmful interference in a residential installation. This equipment generates, uses, and can radiate radio frequency energy and, if not installed and used in accordance with the instructions, may cause harmful interference to radio communications. There is no guarantee that interference will not occur in a particular installation.

The vendor makes no representations or warranties with respect to the contents here and specially disclaims any implied warranties of merchantability or fitness for any purpose. Further the vendor reserves the right to revise this publication and to make changes to the contents here without obligation to notify any party beforehand.

Duplication of this publication, in part or in whole, is not allowed without first obtaining the vendor's approval in writing.

The content of this user's manual is subject to be changed without notice and we will not be responsible for any mistakes found in this user's manual. All the brand and product names are trademarks of their respective companies.



Dichiarazione di conformità sintetica

Ai sensi dell'art. 2 comma 3 del D.M. 275 del 30/10/2002

Si dichiara che questo prodotto è conforme alle normative vigenti e soddisfa i requisiti essenziali richiesti dalle direttive

2004/108/CE, 2006/95/CE e 1999/05/CE

quando ad esso applicabili

Short Declaration of conformity

We declare this product is complying with the laws in force and meeting all the essential requirements as specified by the directives

2004/108/CE, 2006/95/CE and 1999/05/CE

whenever these laws may be applied

Table of Contents

Chapter 1: Introduction	1
1.1 Before You Start	1
1.2 Package Checklist	1
1.3 Motherboard Specifications	2
1.4 Rear Panel Connectors	3
1.5 Motherboard Layout.....	4
Chapter 2: Hardware Installation	5
2.1 Install Central Processing Unit (CPU).....	5
2.2 Install a Heatsink	7
2.3 Connect Cooling Fans.....	8
2.4 Install System Memory	9
2.5 Expansion Slots.....	10
2.6 Jumper Setting	12
2.7 Headers & Connectors.....	13
Chapter 3: UEFI BIOS & Software	18
3.1 UEFI BIOS Setup	18
3.2 BIOS Update.....	18
3.3 Software.....	22
Chapter 4: Useful Help	32
4.1 Driver Installation.....	32
4.2 AMI BIOS Beep Code.....	33
4.3 Troubleshooting.....	33
Appendix: Specifications in Other Languages	35
Arabic.....	36
French	38
German	40
Italian	42
Japanese.....	44
Polish	46
Portuguese	48
Russian	50
Spanish.....	52

CHAPTER 1: INTRODUCTION

1.1 Before You Start

Thank you for choosing our product. Before you start installing the motherboard, please make sure you follow the instructions below:

- Prepare a dry and stable working environment with sufficient lighting.
- Always disconnect the computer from power outlet before operation.
- Before you take the motherboard out from anti-static bag, ground yourself properly by touching any safely grounded appliance, or use grounded wrist strap to remove the static charge.
- Avoid touching the components on motherboard or the rear side of the board unless necessary. Hold the board on the edge, do not try to bend or flex the board.
- Do not leave any unfastened small parts inside the case after installation. Loose parts will cause short circuits which may damage the equipment.
- Keep the computer from dangerous area, such as heat source, humid air and water.
- The operating temperatures of the computer should be 0 to 45 degrees Celsius.
- To avoid injury, be careful of:
 - Sharp pins on headers and connectors
 - Rough edges and sharp corners on the chassis
 - Damage to wires that could cause a short circuit

1.2 Package Checklist

- Serial ATA Cable x2
- Rear I/O Panel for ATX Case x1
- Installation Guide x1
- Fully Setup Driver DVD x1

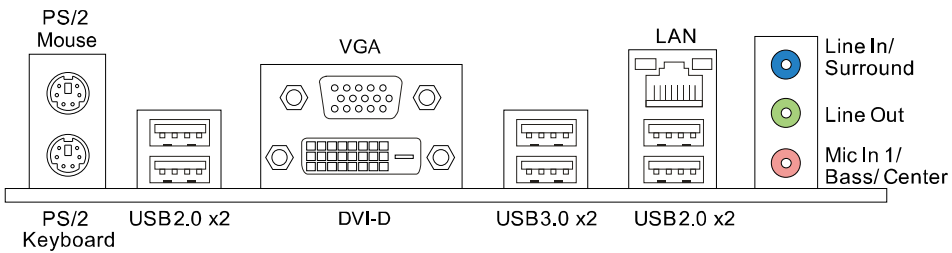
<p>Note: The package contents may be different due to the sales region or models in which it was sold. For more information about the standard package in your region, please contact your dealer or sales representative.</p>

1.3 Motherboard Specifications

Specifications	
CPU Support	Socket 1150 for Intel® Core i7 / i5 / i3 / Pentium / Celeron processor Maximum CPU TDP (Thermal Design Power): 95Watt * Please refer to www.biostar.com.tw for CPU support list.
Chipset	INTEL® B85: Hi-Fi B85Z INTEL® H81: Hi-Fi H81Z
Memory	Supports Dual Channel DDR3 1066/ 1333/ 1600 2 x DDR3 DIMM Memory Slot, Max. Supports up to 16 GB Memory Each DIMM supports non-ECC 512MB/ 1/ 2/ 4/ 8 GB DDR3 module * Please refer to www.biostar.com.tw for Memory support list.
Storage	INTEL® B85, Supports AHCI INTEL® H81, Supports AHCI 4x SATA 6Gb/s Connector 2x SATA 6Gb/s Connector 2x SATA 3Gb/s Connector 2x SATA 3Gb/s Connector
LAN	Realtek RTL 8111GR 10/ 100/ 1000 Mb/s auto negotiation, Half / Full duplex capability
Audio Codec	ALC892, 7.1 Channels, High Definition Audio, Biostar Hi-Fi (2-channel output is from front audio header)
USB	INTEL® B85 4x USB 3.0 port (2 on rear I/Os and 2 via internal headers) 8x USB 2.0 port (4 on rear I/Os and 4 via internal headers) INTEL® H81 2x USB 3.0 port (2 on rear I/Os) 8x USB 2.0 port (4 on rear I/Os and 4 via internal headers)
Expansion Slots	2x PCIe 2.0 x1 Slot 1x PCIe 3.0 x16 Slot (x16), Hi-Fi B85Z 1x PCIe 2.0 x16 Slot (x16), Hi-Fi H81Z
Rear I/Os	1x PS/2 Mouse 1x PS/2 Keyboard 1x VGA Port 1x DVI Port 1x LAN port 4x USB 2.0 Port 2x USB 3.0 Port 3x Audio Jack
Internal I/Os	Hi-Fi B85Z Hi-Fi H81Z 4x SATA 6.0Gb/s Connector 2x SATA 6.0Gb/s Connector 2x SATA 3.0Gb/s Connector 2x SATA 3.0Gb/s Connector 2x USB 2.0 Header (each header 2x USB 2.0 Header (each header supports 2 supports 2 USB 2.0 ports) USB 2.0 ports) 1x USB 3.0 Header (each header 1x 4-Pin Power Connector supports 2 USB 3.0 ports) 1x 24-Pin Power Connector 1x 4-Pin Power Connector 1x CPU Fan Connector

Specifications	
	1x 24-Pin Power Connector 1x CPU Fan Connector 1x System Fan Connector 1x Front Panel Header 1x Front Audio Header 1x Clear CMOS Header 1x Serial Port Header 1x S/PDIF out Connector 1x System Fan Connector 1x Front Panel Header 1x Front Audio Header 1x Clear CMOS Header 1x Serial Port Header 1x S/PDIF out Connector
Form Factor	microATX Form Factor, 226 mm x 174 mm
OS Support	Windows 7/ 8/ 8.1 Biostar reserves the right to add or remove support for any OS with or without notice.

1.4 Rear Panel Connectors



Note1: DVI-D & VGA ports only work with an Intel® integrated Graphics Processor.

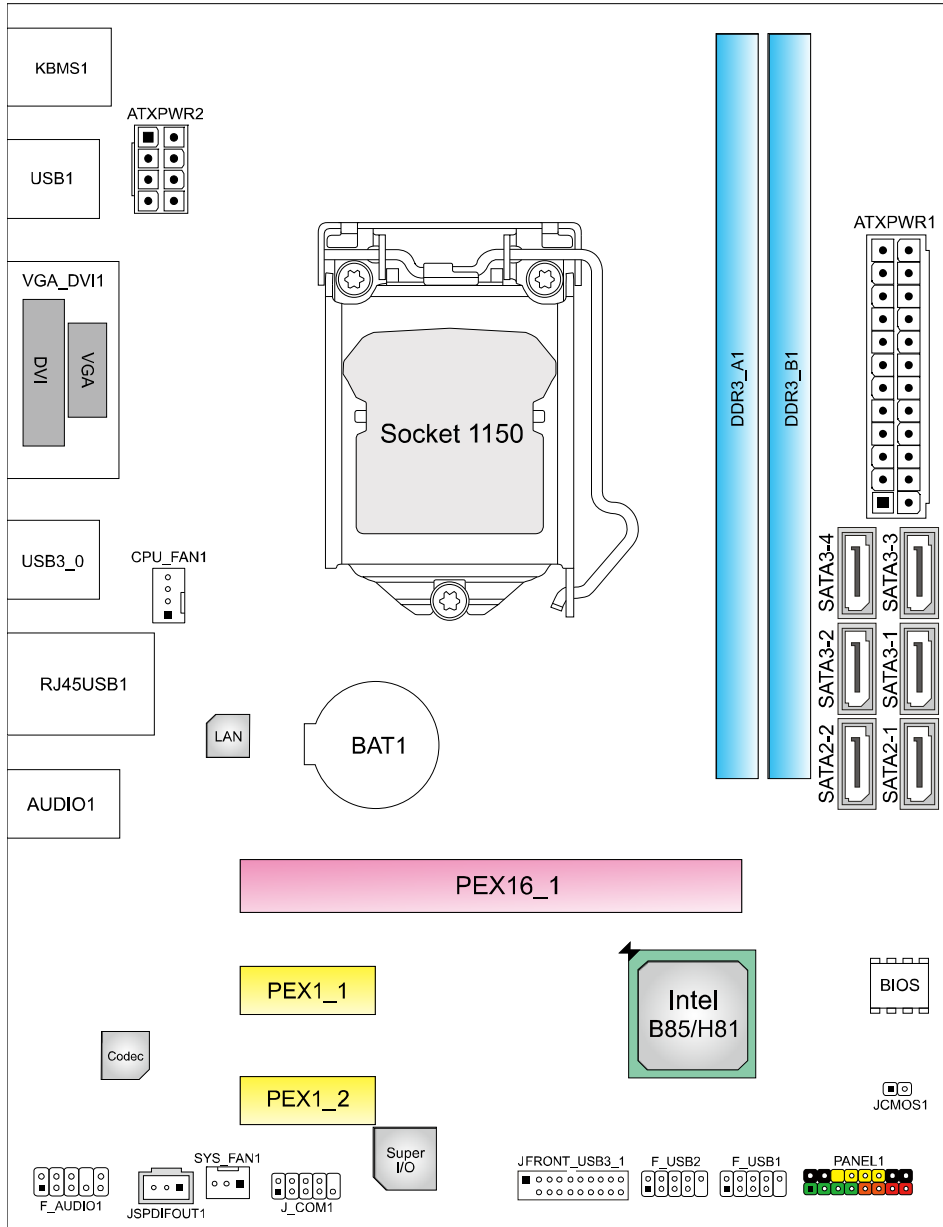
Note2: Maximum resolution:
 DVI: 1920 x 1200 @60Hz
 VGA: 1920 x 1200 @60Hz

Note3: To configure 7.1-channel audio, you have to use a chassis with HD front panel audio module and enable the multi-channel audio feature through O.S. Audio Utility.

The 2/ 4/ 5.1/7.1-channel configuration

Port	2-channel	4-channel	5.1 channel	7.1 channel
Blue (Rear Panel)	Line In	Rear Speaker Out	Rear Speaker Out	Rear Speaker Out
Green (Rear Panel)	Line Out	Front Speaker Out	Front Speaker Out	Front Speaker Out
Pink (Rear Panel)	Mic In	Mic In	Center/Subwoofer Out	Center/Subwoofer Out
Green (Front Panel)	--	--	--	Side Speaker Out

1.5 Motherboard Layout

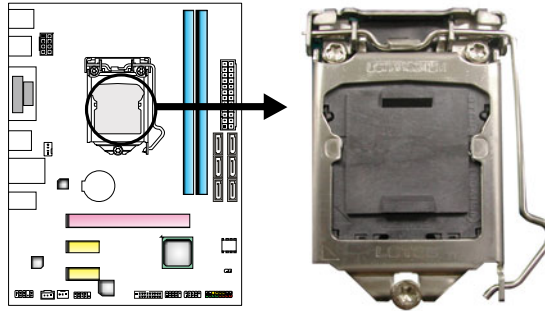


Note1: ■ represents the 1st pin.
Note2: JFRONT_USB3_1 and SATA3-3/3-4 connectors are only for Hi-Fi B85Z.

CHAPTER 2: HARDWARE INSTALLATION

2.1 Install Central Processing Unit (CPU)

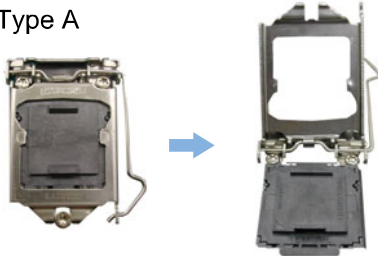
Step 1: Locate the CPU socket on the motherboard



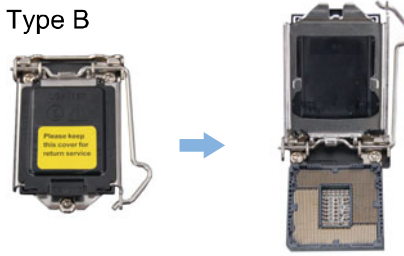
Note1: Remove Pin Cap before installation, and make good preservation for future use. When the CPU is removed, cover the Pin Cap on the empty socket to ensure pin legs won't be damaged.
Note2: The motherboard might equip with two different types of pin cap. Please refer below instruction to remove the pin cap.

Step 2: Pull the socket locking lever out from the socket and then raise the lever up.

Type A

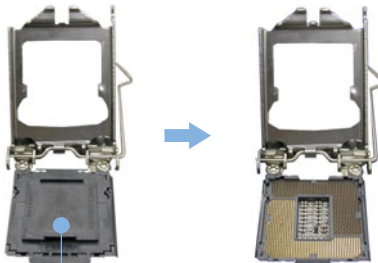


Type B

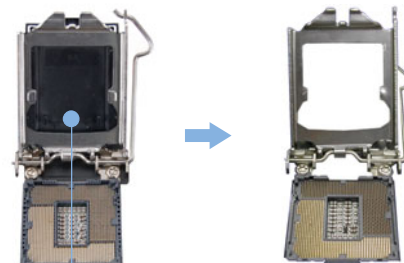


Step 3: Remove the Pin Cap.

Type A



Type B



Motherboard Manual

Step 4: Hold processor with your thumb and index fingers, oriented as shown. Align the notches with the socket. Lower the processor straight down without tilting or sliding the processor in the socket.



Note1: The LGA1155 CPU is not compatible with LGA 1150 socket. Do not install a LGA 1155 CPU on the LGA 1150 socket.

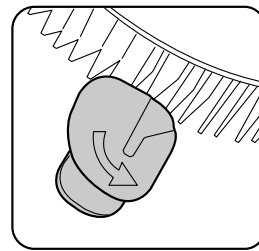
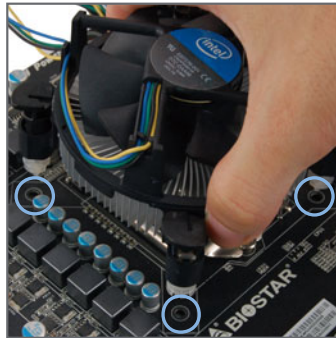
Note2: The CPU fits only in one correct orientation. Do not force the CPU into the socket to prevent damaging the CPU.

Step 5: Hold the CPU down firmly, and then lower the lever to locked position to complete the installation.



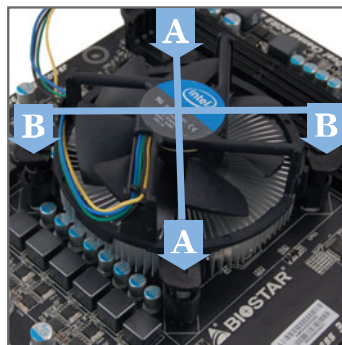
2.2 Install a Heatsink

Step 1: Place the CPU fan assembly on top of the installed CPU and make sure that the four fasteners match the motherboard holes. Orient the assembly and make the fan cable is closest to the CPU fan connector. Ensure the fastener slots are pointing perpendicular to the heatsink.



Correct Orientation

Step 2: Press down two fasteners at one time in a diagonal sequence to secure the CPU fan assembly in place. As each fastener locks into position a click should be heard.



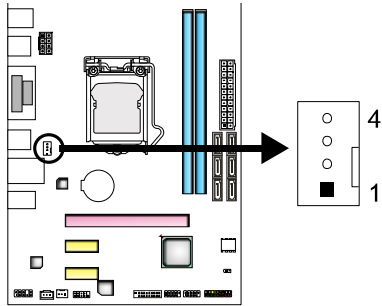
Note1: Do not forget to connect the CPU fan connector.

Note2: For proper installation, please kindly refer to the installation manual of your CPU heatsink.

2.3 Connect Cooling Fans

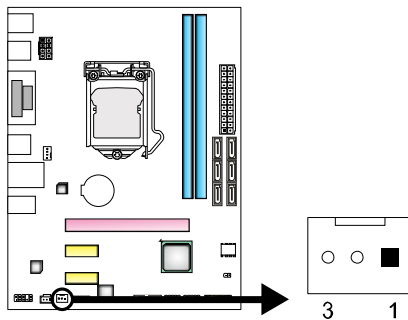
These fan headers support cooling-fans built in the computer. The fan cable and connector may be different according to the fan manufacturer.

CPU_FAN1: CPU Fan Header



Pin	Assignment
1	Ground
2	+12V
3	FAN RPM rate sense
4	Smart Fan Control (By Fan)

SYS_FAN1: System Fan Header

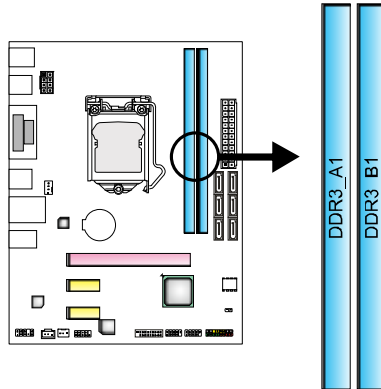


Pin	Assignment
1	Ground
2	+12V
3	FAN RPM rate sense

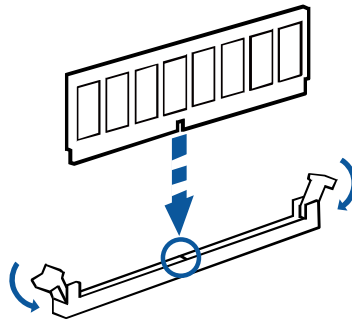
Note: CPU_FAN1, SYS_FAN1 support 4-pin and 3-pin head connectors. When connecting with wires onto connectors, please note that the red wire is the positive and should be connected to pin#2, and the black wire is Ground and should be connected to pin#1(GND).

2.4 Install System Memory

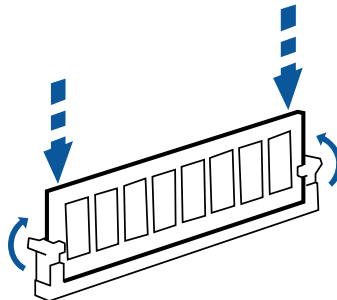
DDR3 Modules



Step 1: Unlock a DIMM slot by pressing the retaining clips outward. Align a DIMM on the slot such that the notch on the DIMM matches the break on the slot.



Step 2: Insert the DIMM vertically and firmly into the slot until the retaining clips snap back in place and the DIMM is properly seated.



Note: If the DIMM does not go in smoothly, do not force it. Pull it all the way out and try again.

Memory Capacity

DIMM Socket Location	DDR3 Module	Total Memory Size
DDR3_A1	512MB/1GB/2GB/4GB/8GB	Max is 16GB.
DDR3_B1	512MB/1GB/2GB/4GB/8GB	

Dual Channel Memory Installation

Please refer to the following requirements to activate Dual Channel function:

Install memory module of the same density in pairs, shown in the table.

Dual Channel Status	DDR3_A1	DDR3_B1
Disabled	O	X
Disabled	X	O
Enabled	O	O

(O means memory installed, X means memory not installed.)

Note: When installing more than one memory module, we recommend to use the same brand and capacity memory on this motherboard.

2.5 Expansion Slots

Install an Expansion Card

You can install your expansion card by following steps:

1. Read the related expansion card's instruction document before install the expansion card into the computer.
2. Remove your computer's chassis cover, screws and slot bracket from the computer.
3. Place a card in the expansion slot and press down on the card until it is completely seated in the slot.
4. Secure the card's metal bracket to the chassis back panel with a screw.
5. Replace your computer's chassis cover.
6. Power on the computer, if necessary, change BIOS settings for the expansion card.
7. Install related driver for the expansion card.

PEX16_1: PCI-Express Gen3 x16 Slot (Hi-Fi B85Z)

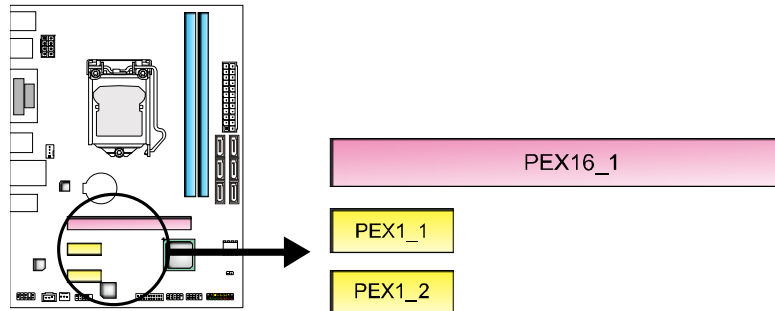
- PCI-Express 3.0 compliant.
- Maximum theoretical realized bandwidth of 16GB/s simultaneously per direction, for an aggregate of 32GB/s totally.

PEX16_1: PCI-Express Gen2 x16 Slot (Hi-Fi H81Z)

- PCI-Express 2.0 compliant.
- Maximum theoretical realized bandwidth of 8GB/s simultaneously per direction, for an aggregate of 16GB/s totally.

PEX1_1/1_2: PCI-Express Gen2 x1 Slots

- PCI-Express 2.0 compliant.
- Data transfer bandwidth up to 500MB/s per direction; 1GB/s in total



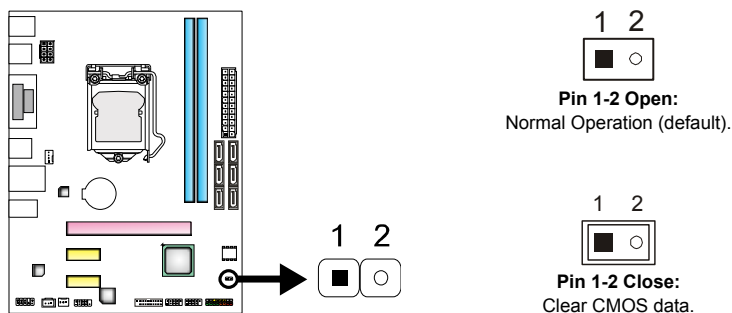
2.6 Jumper Setting

The illustration shows how to set up jumpers. When the jumper cap is placed on pins, the jumper is “close”, if not, that means the jumper is “open”.



JCMOS1: Clear CMOS Jumper

The jumper allows users to restore the BIOS safe setting and the CMOS data. Please carefully follow the procedures to avoid damaging the motherboard.



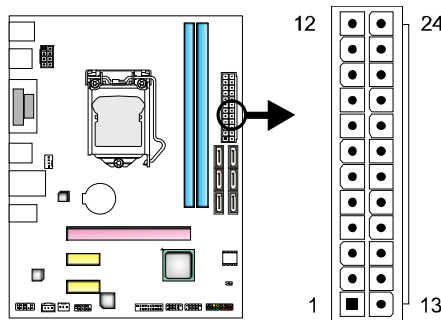
※ Clear CMOS Procedures:

1. Remove AC power line.
2. Set the jumper to “Pin 1-2 close”, you can use a metal object like a screwdriver to touch the two pins.
3. Wait for five seconds.
4. After clearing the CMOS values, be sure the jumper is “Pin 1-2 open”.
5. Power on the AC.
6. Load Optimal Defaults and save settings in CMOS.

2.7 Headers & Connectors

ATXPWR1: ATX Power Source Connector

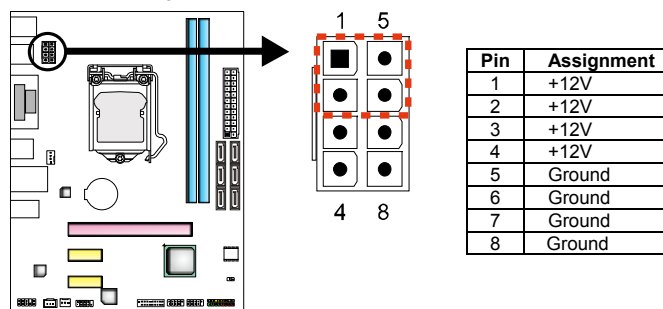
For better compatibility, we recommend to use a standard ATX 24-pin power supply for this connector. Make sure to find the correct orientation before plugging the connector.



Pin	Assignment	Pin	Assignment
13	+3.3V	1	+3.3V
14	-12V	2	+3.3V
15	Ground	3	Ground
16	PS_ON	4	+5V
17	Ground	5	Ground
18	Ground	6	+5V
19	Ground	7	Ground
20	NC	8	PW_OK
21	+5V	9	Standby Voltage+5V
22	+5V	10	+12V
23	+5V	11	+12V
24	Ground	12	+3.3V

ATXPWR2: ATX Power Source Connector

The connector provides +12V to the CPU power circuit. If the CPU power plug is 4-pin, please plug it into Pin 1-2-5-6 of ATXPWR2.



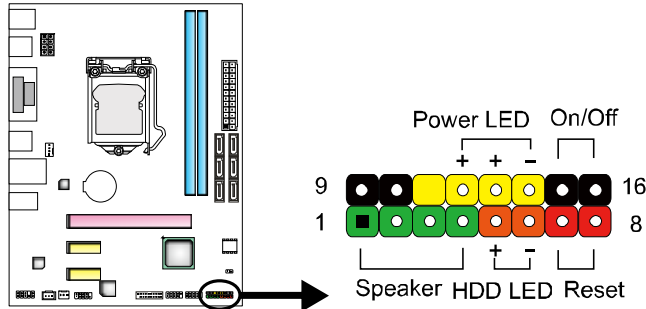
Pin	Assignment
1	+12V
2	+12V
3	+12V
4	+12V
5	Ground
6	Ground
7	Ground
8	Ground

Note1: Before you power on the system, please make sure that both ATXPWR1 and ATXPWR2 connectors have been plugged-in.

Note2: Insufficient power supplied to the system may result in instability or the peripherals not functioning properly. Use of a PSU with a higher power output is recommended when configuring a system with more power-consuming devices.

PANEL1: Front Panel Header

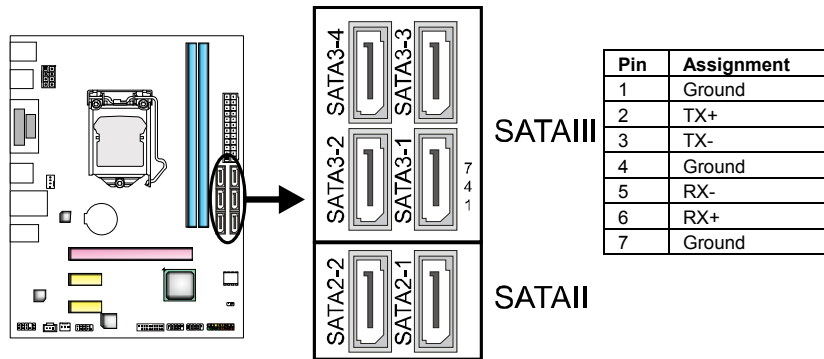
This 16-pin header includes Power-on, Reset, HDD LED, Power LED, and speaker connection. It allows user to connect the PC case's front panel switch functions.



Pin	Assignment	Function	Pin	Assignment	Function
1	+5V	Speaker Connector	9	N/A	N/A
2	N/A		10	N/A	
3	N/A		11	N/A	
4	Speaker		12	Power LED (+)	Power LED
5	HDD LED (+)	13	Power LED (+)		
6	HDD LED (-)	Hard drive LED	14	Power LED (-)	Power-on button
7	Ground		15	Power button	
8	Reset control	Reset button	16	Ground	

SATA2-1/2-2 & SATA 3-1/3-2/3-3/3-4: Serial ATA Connectors

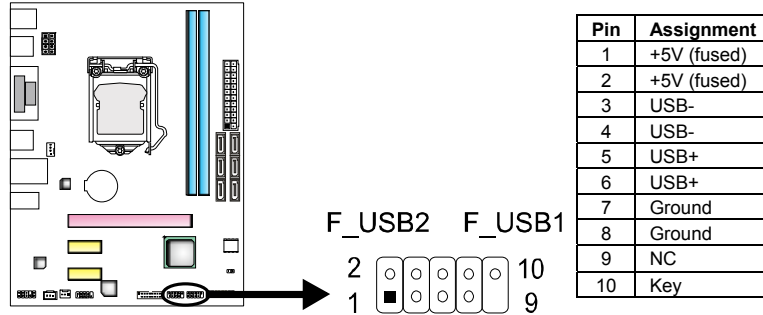
These connectors connect to SATA hard disk drives via SATA cables.



Note: SATA3-3/3-4 connectors are only for Hi-Fi B85Z.

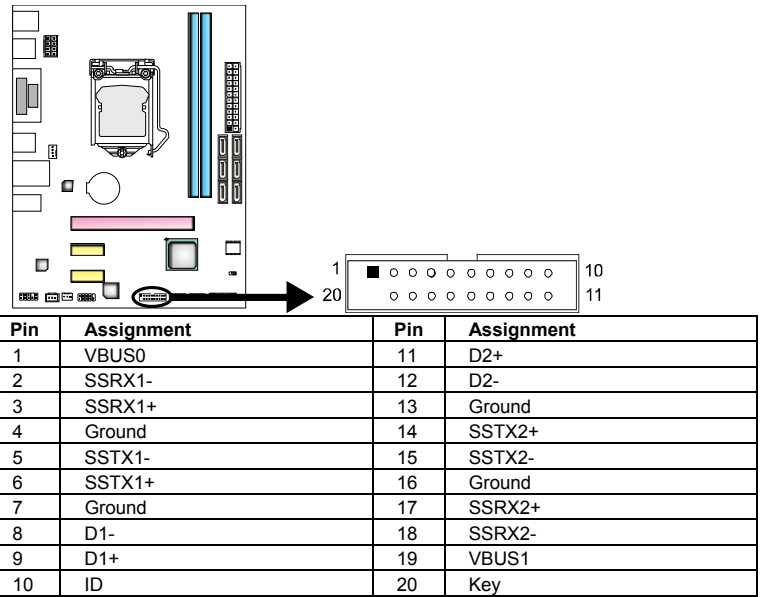
F_USB1/2: Header for USB 2.0 Ports at Front Panel

This header allows user to add additional USB ports on the PC front panel, and also can be connected with a wide range of external peripherals.



JFRONT_USB3_1: Header for USB 3.0 Ports at Front Panel

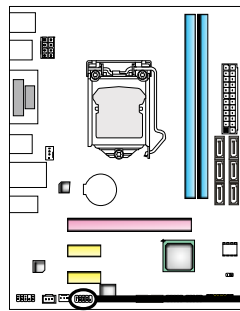
This header allows user to add additional USB ports on the PC front panel, and also can be connected with a wide range of external peripherals.



Note: JFRONT_USB3_1 is only for Hi-Fi B85Z.

J_COM: Serial Port Header

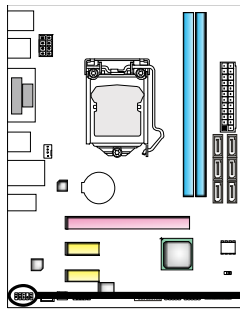
The motherboard has a serial port header for connecting RS-232 Port.



Pin	Assignment
1	Carrier detect
2	Received data
3	Transmitted data
4	Data terminal ready
5	Signal ground
6	Data set ready
7	Request to send
8	Clear to send
9	Ring indicator
10	NC

F_AUDIO1: Front Panel Audio Header

This header allows user to connect the chassis-mount front panel audio I/O which supports HD and AC'97 audio standards.



HD Audio		AC'97	
Pin	Assignment	Pin	Assignment
1	Mic Left in	1	Mic In
2	Ground	2	Ground
3	Mic Right in	3	Mic Power
4	GPIO	4	Audio Power
5	Right line in/out	5	RT Line Out
6	Jack Sense	6	RT Line Out
7	Front Sense	7	Reserved
8	Key	8	Key
9	Left line in/out	9	LFT Line Out
10	Jack Sense	10	LFT Line Out

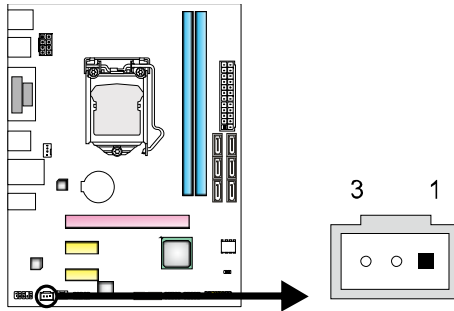
Note1: It is recommended that you connect a high-definition front panel audio module to this connector to avail of the motherboard's high definition audio capability.

Note2: Please try to disable the "Front Panel Jack Detection" if you want to use an AC'97 front audio output cable. The function can be found via O.S. Audio Utility.

Note3: To configure 7.1-channel audio, you have to use a chassis with HD front panel audio module and enable the multi-channel audio feature through O.S. Audio Utility.

JSPDIFOUT1: Digital Audio-out Connector

The connector is for connecting the S/PDIF output bracket.



Pin	Assignment
1	+5V
2	SPDIF_OUT
3	Ground

CHAPTER 3: UEFI BIOS & SOFTWARE

3.1 UEFI BIOS Setup

- The BIOS Setup program can be used to view and change the BIOS settings for the computer. The BIOS Setup program is accessed by pressing the key after the Power-On Self-Test (POST) memory test begins and before the operating system boot begins.
- For further information of setting up the UEFI BIOS, please refer to the UEFI BIOS Manual in the Setup DVD.

3.2 BIOS Update

The BIOS can be updated using either of the following utilities:

- **BIOSTAR BIOS Flasher:** Using this utility, the BIOS can be updated from a file on a hard disk, a USB drive (a flash drive or a USB hard drive), or a CD-ROM.
- **BIOSTAR BIOS Update Utility:** It enables automated updating while in the Windows environment. Using this utility, the BIOS can be updated from a file on a hard disk, a USB drive (a flash drive or a USB hard drive), or a CD-ROM, or from the file location on the Web.

BIOSTAR BIOS Flasher

BIOSTAR BIOS Flasher is a BIOS flashing utility providing you an easy and simple way to update your BIOS via USB pen drive.

Note1: This utility only allows storage device with FAT32/16 format and single partition.

Note2: Shutting down or resetting the system while updating the BIOS will lead to system boot failure.

Updating BIOS with BIOSTAR BIOS Flasher

1. Go to the website to download the latest BIOS file for the motherboard.
2. Then, copy and save the BIOS file into a USB flash (pen) drive.
3. Insert the USB pen drive that contains the BIOS file to the USB port.
4. Power on or reset the computer and then press <F12> during the POST process.

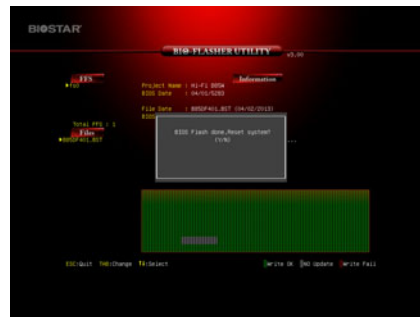
5. After entering the POST screen, the BIOS-FLASHER utility pops out. Choose [fs0] to search for the BIOS file.



6. Select the proper BIOS file, and a message asking if you are sure to flash the BIOS file. Click Yes to start updating BIOS.



7. A dialog pops out after BIOS flash is completed, asking you to restart the system. Press the [Y] key to restart system.



8. While the system boots up and the full screen logo shows up, press key to enter BIOS setup. After entering the BIOS setup, please go to the **Save & Exit**, using the **Restore Defaults** function to load Optimized Defaults, and select **Save Changes and Reset** to restart the computer. Then, the BIOS Update is completed.

BIOS Update Utility (through the Internet)

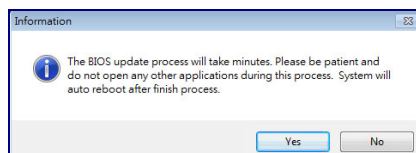
1. Installing BIOS Update Utility from the DVD Driver.
2. Please make sure the system is connected to the internet before using this function.

3. Launch BIOS Update Utility and click the **Online Update** button on the main screen.

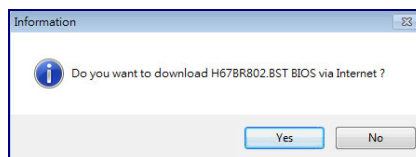


Motherboard Manual

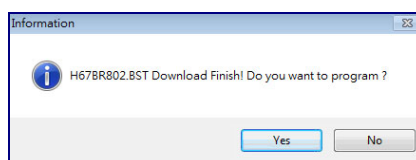
4. An open dialog will show up to request your agreement to start the BIOS update. Click **Yes** to start the online update procedure.



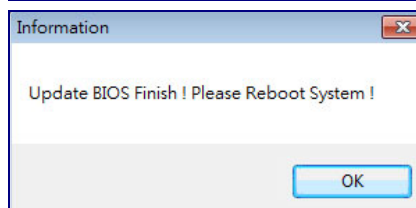
5. If there is a new BIOS version, the utility will ask you to download it. Click **Yes** to proceed.



6. After the download is completed, you will be asked to program (update) the BIOS or not. Click **Yes** to proceed.



7. After the updating process is finished, you will be asked you to reboot the system. Click **OK** to reboot.



8. While the system boots up and the full screen logo shows up, press key to enter BIOS setup. After entering the BIOS setup, please go to the **Save & Exit**, using the **Restore Defaults** function to load Optimized Defaults, and select **Save Changes and Reset** to restart the computer. Then, the BIOS Update is completed.

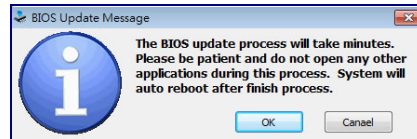
BIOS Update Utility (through a BIOS file)

1. Installing BIOS Update Utility from the DVD Driver.
2. Download the proper BIOS from <http://www.biostar.com.tw/>

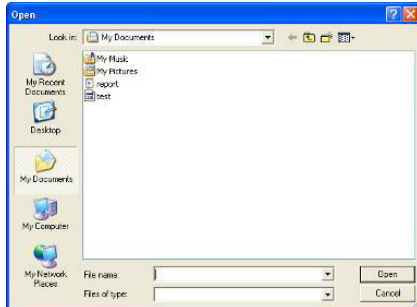
3. Launch BIOS Update Utility and click the **Update BIOS** button on the main screen.



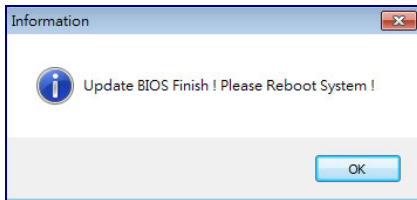
4. A warning message will show up to request your agreement to start the BIOS update. Click **OK** to start the update procedure.



5. Choose the location for your BIOS file in the system. Please select the proper BIOS file, and then click on **Open**. It will take several minutes, please be patient.



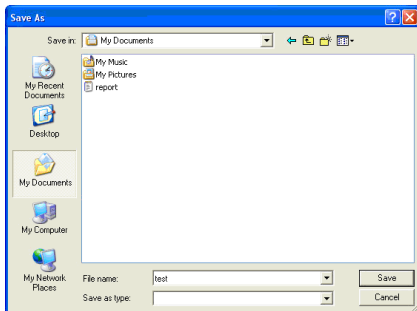
6. After the BIOS Update process is finished, click on **OK** to reboot the system.



7. While the system boots up and the full screen logo shows up, press key to enter BIOS setup. After entering the BIOS setup, please go to the **Save & Exit**, using the **Restore Defaults** function to load Optimized Defaults, and select **Save Changes and Reset** to restart the computer. Then, the BIOS Update is completed.

Backup BIOS

Click the Backup BIOS button on the main screen for the backup of BIOS, and select a proper location for your backup BIOS file in the system, and click **Save**.



3.3 Software

Installing Software

1. Insert the Setup DVD to the optical drive. The driver installation program would appear if the Auto-run function has been enabled.
2. Select **Software Installation**, and then click on the respective software title.
3. Follow the on-screen instructions to complete the installation.

Launching Software

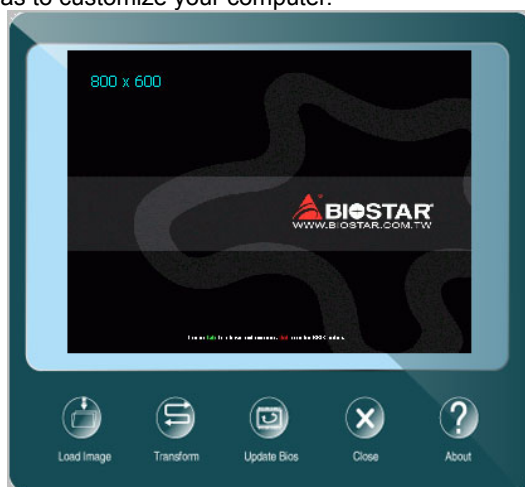
After the installation process is completed, you will see the software icon showing on the desktop. Double-click the icon to launch it.

Note1: All the information and content about following software are subject to be changed without notice. For better performance, the software is being continuously updated.

Note2: The information and pictures described below are for your reference only. The actual information and settings on board may be slightly different from this manual.

BIOScreen Utility

This utility allows you to personalize your boot logo easily. You can choose BMP as your boot logo so as to customize your computer.



Please follow the step-by-step instructions below to update boot logo:

- Load Image : Choose the picture as the boot logo.
- Transform : Transform the picture for BIOS and preview the result.
- Update Bios : Write the picture to BIOS Memory to complete the update.

eHot-Line

eHot-Line is a convenient utility that helps you to contact with our Tech-Support system. This utility will collect the system information which is useful for analyzing the problem you may have encountered, and then send these information to our tech-support department to help you fix the problem.

Note: Before you use this utility, please set Outlook Express as your default e-mail client application program.

*represents important information that you must provide. Without this information, you may not be able to send out the mail.

This block will show the information which would be collected in the mail.

*Describe condition of your system.

*Select your area or the area close to you.

Provide the e-mail address that you would like to send the copy to.

*Provide the name of the memory module manufacturer.

Provide the name of the power supply manufacturer and the model no.

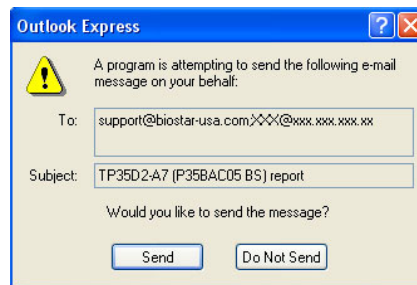
Send the mail out.

Save these information to a .txt file

Exit this dialog.

After filling up this information, click **“Send”** to send the mail out. A warning dialog would appear asking for your confirmation; click **“Send”** to confirm or **“Do Not Send”** to cancel.

If you want to save this information to a .txt file, click **“Save As...”** and then you will see a saving dialog appears asking you to enter file name.



Smart EAR

Hi-Fi Audio Requirements:

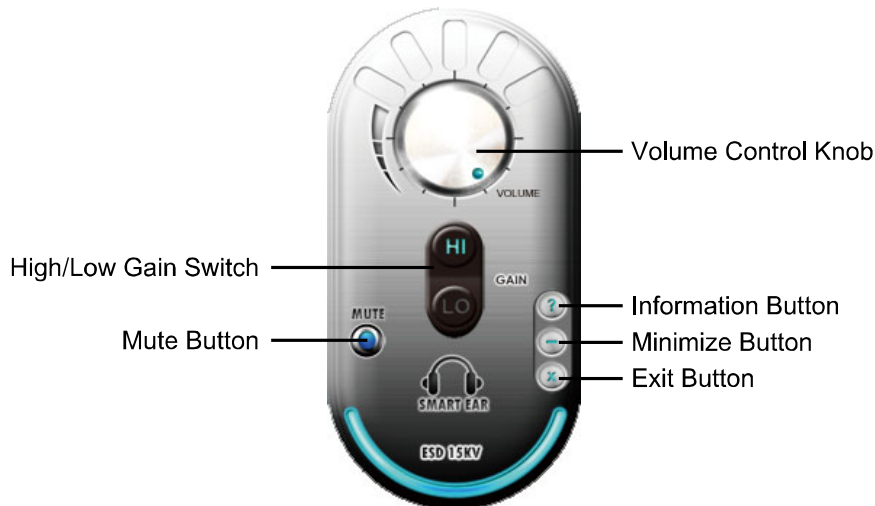
1. An earphone or a headphone
2. A chassis with front audio output jacks, or you can connect the earphone directly to audio line-out port of rear I/Os.
3. Windows 7/ 8/ 8.1 operation system

Installation Guide:

1. Make sure the front audio cable of the chassis connected to the front audio header of the motherboard properly.
2. Install the Smart Ear Utility from the driver DVD.
3. Connect the earphone to the front audio jack of the chassis or audio line-out port of rear I/Os.

Note: If you want to use an AC'97 front audio output cable, please disable the "Front Panel Jack Detection" setting. This setting can be found via O.S. Audio Utility.

Smart EAR Utility:



- **High/Low Gain Switch:** Keep the gain switch to low for low impedance headphone and set to high for high impedance headphone.
- **Mute Button:** To disable system sound
- **Volume Control Knob:** The volume can be finely adjusted by turning the knob either clockwise or anti-clockwise to increase or decrease system volume accordingly.
- **Information Button:** Get information of the application
- **Minimize Button:** Minimize the application window to the taskbar
- **Exit Button:** Exit the application

Smart Connect Technology

Intel® Smart Connect Technology is designed to update programs by periodically waking your computer from sleep/standby mode for a short time. This function works with applications that automatically get their data from the Internet.

System Requirement:

- Intel Smart Connect Technology enabled in BIOS Setup
- Set the “ACPI Sleep State” to S3 in BIOS Setup.
- Windows 7, Windows 8 and Windows 8.1
- Normal internet connection

Configuring Intel Smart Connect Technology

Step 1: After installing the operating system and motherboard drivers, install the Intel Smart Connect Technology application. Restart your computer when completed.

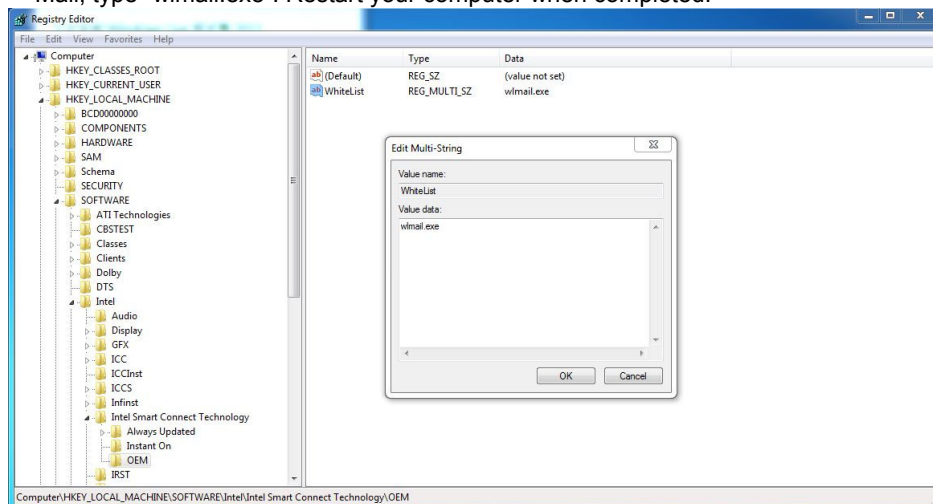
Step 2: Click on start menu and input "regedit" in the search bar. Press enter to open the registry editor. Look for the following directory in the registry editor:

Computer\HKEY_LOCAL_MACHINE\SOFTWARE\Intel\Intel Smart Connect Technology

Right-click on *Intel Smart Connect Technology* and select *New > Key*. Type “OEM”.

Note: Intel Smart Connect Technology is for S3 mode only. During the updating process, the monitor will not light up and no sound will be output from the speaker.

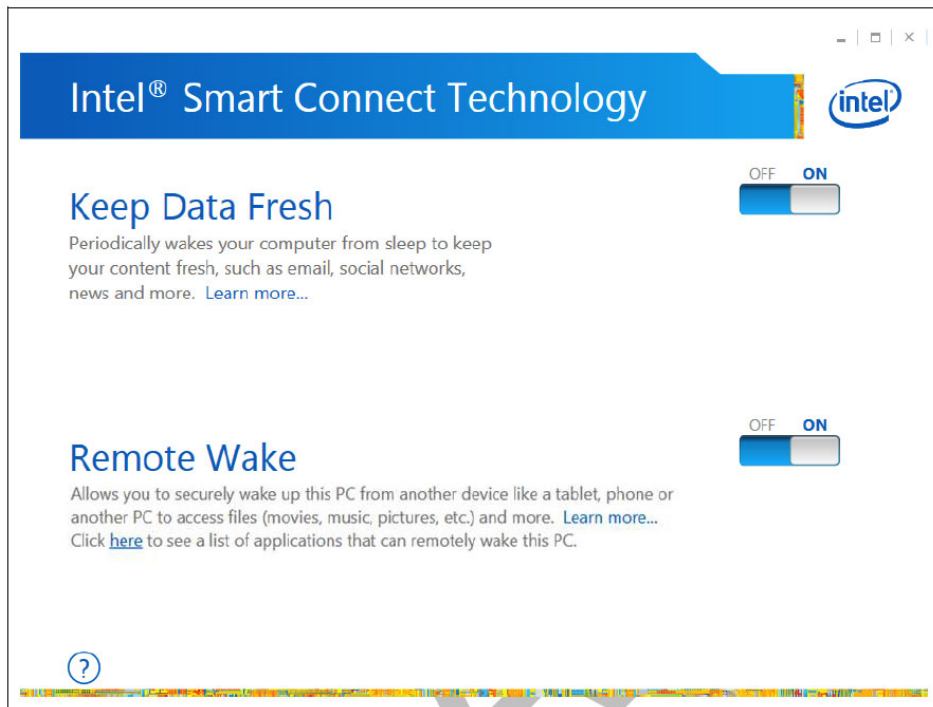
Step 3: As shown in the screenshot below, right-click on OEM, select *New > Multi-String Value*, and type “WhiteList”. Double-click *WhiteList* and type the application name to be added in *Edit Multi-String*. For example, to add Microsoft Live Mail, type “wmail.exe”. Restart your computer when completed.



Step 4: After completing the steps above, go to *Start\All Programs\Intel* and launch *Intel(R) Smart Connect Technology*.

Configuration Utility

The Intel Smart Connect Technology Configuration Utility allows configuration of the sleep duration, extended hours sleep duration, and viewing of the Event History along with other settings. To launch the application, select the application “Intel® Smart Connect Technology in the Start menu (Windows* 7) or Start screen (Windows* 8/8.1) to launch the configuration GUI. Once launched, the following is presented:



Note: For detailed setting of Intel® Smart Connect Technology, please check the below link.
<http://www.intel.com/support/services/smartconnect/sb/CS-033109.htm>

Rapid Start Technology

Intel® Rapid Start technology enables your system to get up and running faster from even the deepest sleep, saving time and power consumption. Feel secure knowing that your system will still resume to working conditions in the event of unexpected power loss while in sleep mode.

System Requirement:

- An Intel® SATA SSD (SATA Gen2 or Gen3. Preferably Gen3, and 80 GB or larger)
- Windows 7 and Windows 8

Note1: Please visit below webpage for more details about operating systems supporting http://www.intel.com/p/en_US/support

Installing Intel® RST:

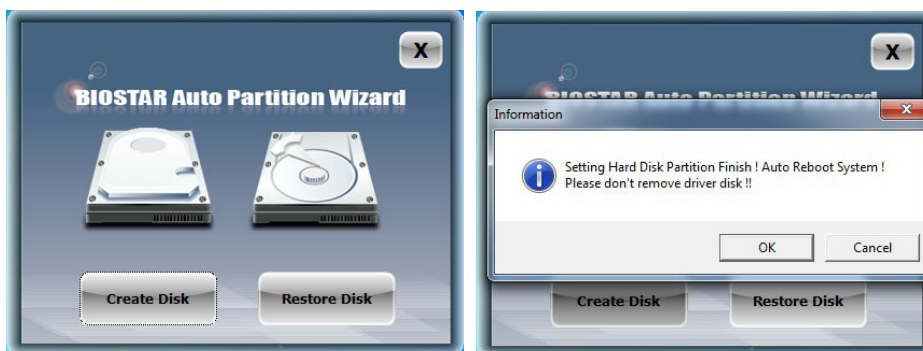
Step 1: BIOS Setting

- 1-1 Go to [Advanced Menu] > [ACPI Settings], and set [ACPI Sleep State] to S3 (Suspend to RAM)
- 1-2 Go to [Advanced Menu] > [SATA Configuration], and set [SATA Mode Selection] to AHCI
- 1-3 Go to [Advanced Menu] and set [Intel(R) Rapid Start Technology] to Enabled
- 1-4 Save your changes, and then exit the BIOS Setup.

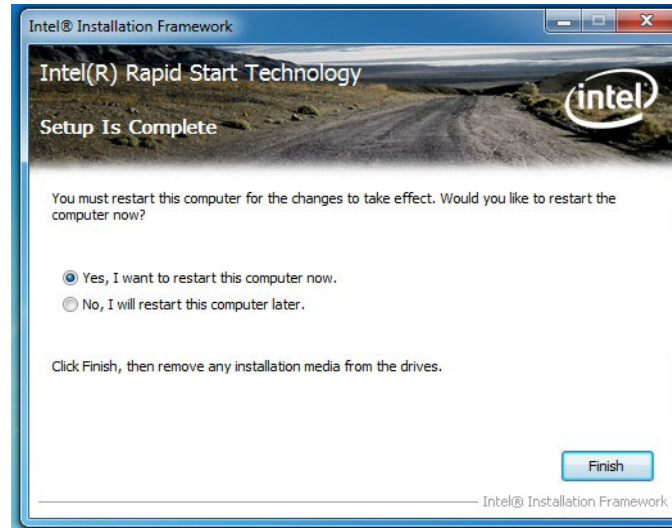
Step 2: Operating System Installation

Step 3: Installing Intel® Rapid Start Application

- 3-1 Insert the setup Driver DVD into your optical drive. Click “Intel Rapid Start Technology” to launch the program.
- 3-2 Below window will pop-out, then click “Create Disk” to start disk partition. After disk partition finished, please click “OK” then system will reboot automatically.

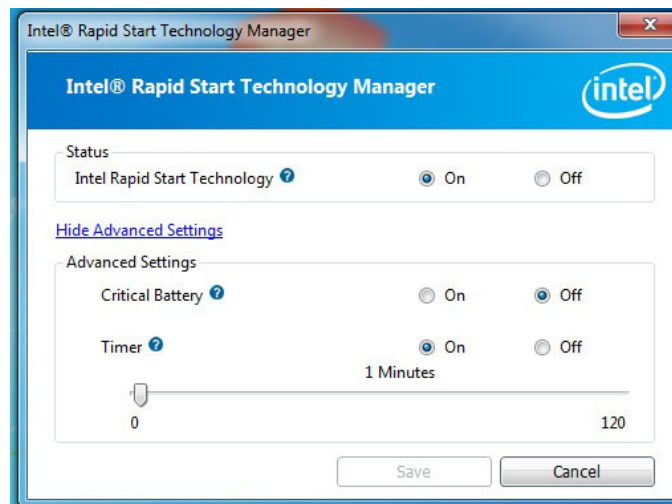


3-3 After rebooting, the system will setup Intel® Rapid Start Technology automatically. We recommend you restart the system after this installation is complete,



Step 4: Configuring Intel® Rapid Start Application

Launch the Intel® Rapid Start Technology Manager application from [Start] > [All Programs] > [Intel] or click the icon  in the notification area.



Intel® Small Business Advantage

Intel Small Business Advantage (Intel SBA) provides an out-of-the-box hardware-based security and productivity suite designed for the small business user.

Software Monitor

Software Monitor helps keep critical security software running by monitoring it at the hardware level and alerting the business if there has been an attack. The Software Monitor also maintains an event log that shows status information and any errors generated, so businesses can know what happened.

Data Backup and Restore

Data Backup and Restore provides reliable after-hours backup of critical data using the local maintenance timer to power on the computer. Data can be backed up to a designated location.

USB Blocker

The optional USB Blocker lets businesses control access to their infrastructure, preventing unauthorized USB devices or file imports or exports on company computers.

PC Health Center

PC Health Center can schedule and do PC maintenance tasks after hours, without interrupting employee work time. Tasks such as updating the operating system, deleting temporary internet files, and running disk defragmentation can be done at night. PC Health Center works even if the computer is powered-down, as long as it is plugged in.

Energy Saver

With the optional Energy Saver, businesses can save energy by scheduling PCs to power-down at the end of the day and turn on before the work day begins - ready for employees as they arrive in the morning.

Supported Operating Systems:

Windows 7 and Windows 8

Note1: Please visit below webpage for more details about operating systems supporting http://www.intel.com/p/en_US/support

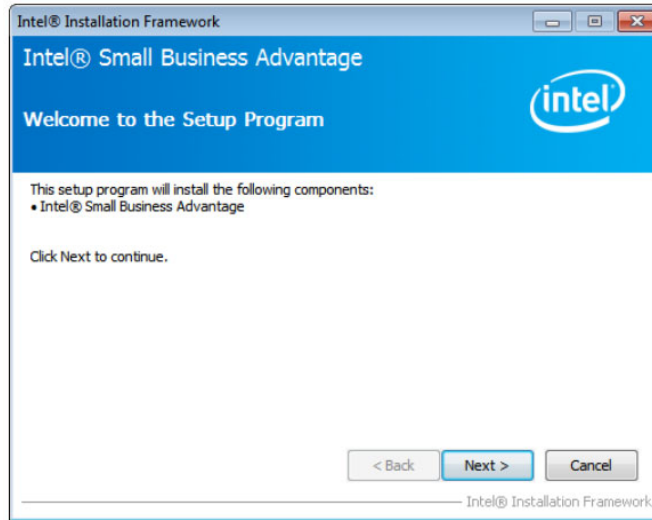
Note2: This function is only supported by B85 chipset.

Installing Intel SBA

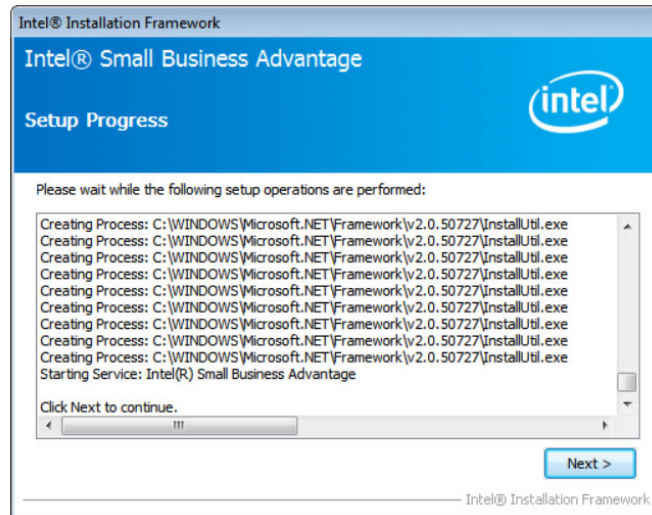
This procedure describes how to install Intel SBA.

1. Logon to the computer with a user that has administrator privileges.
2. Copy the Setup.exe file to the computer.
3. Double-click Setup.exe.

The Welcome to the Setup Program window opens.



4. Click Next. The installer starts the installation and the Setup Progress window opens showing the progress of the installation. When installation is complete, the installer starts the Intel SBA service and the Next button is enabled.



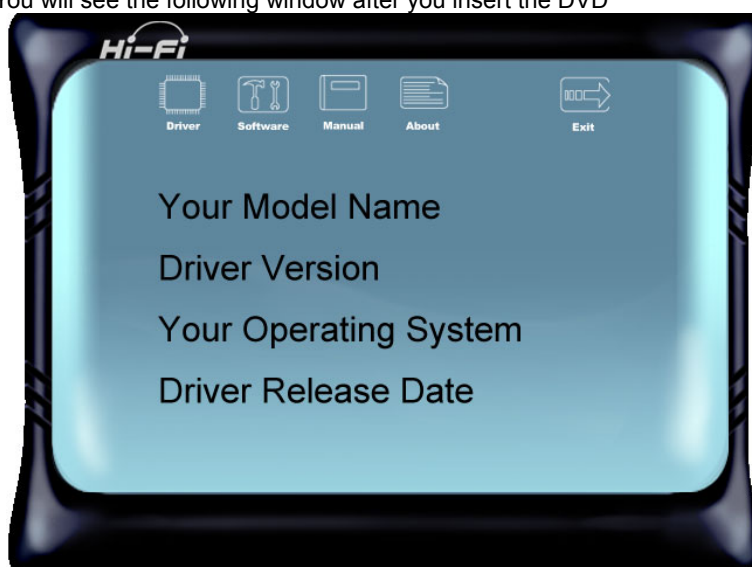
5. Click Next. The Setup Is Complete window opens.
6. Click Finish. The installer closes.

CHAPTER 4: USEFUL HELP

4.1 Driver Installation

After you installed your operating system, please insert the Fully Setup Driver DVD into your optical drive and install the driver for better system performance.

You will see the following window after you insert the DVD



The setup guide will auto detect your motherboard and operating system.

A. Driver Installation

To install the driver, please click on the Driver icon. The setup guide will list the compatible driver for your motherboard and operating system. Click on each device driver to launch the installation program.

B. Software Installation

To install the software, please click on the Software icon. The setup guide will list the software available for your system, click on each software title to launch the installation program.

C. Manual

Aside from the paperback manual, we also provide manual in the Driver DVD. Click on the Manual icon to browse for available manuals.

Note1: If this window didn't show up after you insert the Driver DVD, please use file browser to locate and execute the file SETUP.EXE under your optical drive.

Note2: You will need Acrobat Reader to open the manual file. Please download the latest version of Acrobat Reader software from <http://get.adobe.com/reader/>

4.2 AMI BIOS Beep Code

Boot Block Beep Codes

Number of Beeps	Description
Continuing	Memory sizing error or Memory module not found

POST BIOS Beep Codes

Number of Beeps	Description
1	Success booting.
8	Display memory error (system video adapter)

4.3 Troubleshooting

Probable	Solution
<ol style="list-style-type: none"> There is no power in the system. Power LED does not shine; the fan of the power supply does not work Indicator light on keyboard does not shine. 	<ol style="list-style-type: none"> Make sure power cable is securely plugged in. Replace cable. Contact technical support.
System is inoperative. Keyboard lights are on, power indicator lights are lit, and hard drives are running.	Using even pressure on both ends of the DIMM, press down firmly until the module snaps into place.
System does not boot from a hard disk drive, but can be booted from optical drive.	<ol style="list-style-type: none"> Check cable running from disk to disk controller board. Make sure both ends are securely plugged in; check the drive type in the standard CMOS setup. Backing up the hard drive is extremely important. All hard disks are capable of breaking down at any time.
System only boots from an optical drive. Hard disks can be read, applications can be used, but system fails to boot from a hard disk.	<ol style="list-style-type: none"> Back up data and applications files. Reformat the hard drive. Re-install applications and data using backup disks.
Screen message shows "Invalid Configuration" or "CMOS Failure."	Review system's equipment. Make sure correct information is in setup.
System cannot boot after user installs a second hard drive.	<ol style="list-style-type: none"> Set master/slave jumpers correctly. Run SETUP program and select correct drive types. Call the drive manufacturers for compatibility with other drives.

CPU Overheated

If the system shutdown automatically after power on system for seconds, that means the CPU protection function has been activated.

When the CPU is over heated, the motherboard will shutdown automatically to avoid a damage of the CPU, and the system may not power on again.

In this case, please double check:

1. The CPU cooler surface is placed evenly with the CPU surface.
2. CPU fan is rotated normally.
3. CPU fan speed is fulfilling with the CPU speed.

After confirmed, please follow steps below to relief the CPU protection function.

1. Remove the power cord from power supply for seconds.
2. Wait for seconds.
3. Plug in the power cord and boot up the system.

Or you can:

1. Clear the CMOS data.
2. Wait for seconds.
3. Power on the system again.

This Page Intentionally Left Blank

APPENDIX: Specifications in Other Languages

Arabic

المواصفات	
Intel® Core i7 / i5 / i3 / Pentium / Celeron المأخذ 1150 لمعالج إيه إم دي الحد الأقصى للطاقة الحرارية في تصميم المعالج (TDP – thermal design power) : 95 واط. * يرجى الرجوع إلى الموقع www.biostar.com.tw لقائمة دعم المعالج CPU.	قاعدة وحدة المعالجة المركزية
INTEL® B85: Hi-Fi B85Z INTEL® H81: Hi-Fi H81Z	مجموعة الشرائح
DDR3 1066/ 1333/ 1600 تدعم قناة مزدوجة دي. دي. ار. 2x دي. دي. ار. DDR3 فتحات الذاكرة المزدوجة DIMM، تتحمل كحد أقصى 16 جيجابايت ذاكرة كل فتحة مزدوجة DIMM تتحمل دون ECC 512 ميجا بايت / 8/4/2/1 جيجابايت دي. دي. ار DDR3 * يرجى الرجوع إلى الموقع www.biostar.com.tw لقائمة دعم الذاكرة.	الذاكرة
AHCI INTEL® H81 تتحمل رايد AHCI وصلة 2x ساتا SATA 6 جيجا بايت / الثانية وصلة 2x ساتا SATA 3 جيجا بايت / الثانية	التخزين
INTEL® B85 تتحمل رايد AHCI وصلة 4x ساتا SATA 6 جيجا بايت / الثانية وصلة 2x ساتا SATA 3 جيجا بايت / الثانية	التخزين
ريالتيك رت ل REALTEK RTL 8111GR 1000 / 100 / 10 ميجابايت / الثانية ، تحديد تلقائي ، النصف / القدرة القصوى المزدوجة	شبكة محلية LAN
Biostar Hi-Fi, ALC892, 7.1 قنوات عالية الدقة.	الترميز الصوتي
INTEL® B85 منافذ 4 x ناقل متسلسل عام USB 3.0 (2 في المداخل والمخارج الخلفية و 2 من خلال الموزع الداخلي) منافذ 8 x ناقل متسلسل عام USB 2.0 (4 في المداخل والمخارج الخلفية و 4 من خلال الموزع الداخلي) INTEL® H81 منافذ 2 x ناقل متسلسل عام USB 3.0 (2 في المداخل والمخارج الخلفية) منافذ 8 x ناقل متسلسل عام USB 2.0 (4 في المداخل والمخارج الخلفية و 4 من خلال الموزع الداخلي)	ناقل متسلسل عام USB
2 x فتحة منفذ الملحقات الإضافية PCIe 2.0 x 1 1 x فتحة منفذ الملحقات الإضافية PCIe 2.0 x 16 (x16) 1 x فتحة منفذ الملحقات الإضافية PCIe 3.0 x 16 (x16)	فتحات التوسع
1 x PS/2 الماوس 1 x PS/2 لوحة المفاتيح فتحة توصيل عدد 1 x منظومة العرض المرئي VGA فتحة توصيل عدد 1 x واجهة مرئية رقمية DVI فتحة لتوصيل عدد 1 x الشبكة المحلية LAN فتحة توصيل عدد 4 x ناقل متسلسل عام USB 2.0 فتحة توصيل عدد 2 x ناقل متسلسل عام USB 3.0 فتحة توصيل عدد 3 x جاك للصوت	المداخل والمخارج الخلفية
Hi-Fi H81Z وصلة 2 x SATA 6 جيجابايت / الثانية وصلة 2 x SATA 3 جيجابايت / الثانية موزع 2 x ناقل متسلسل عام USB 2.0 (كل موزع يتحمل فتحتين ناقل متسلسل عام USB 2.0) وصلة للطاقة 1 x 4 دبائيس وصلة للطاقة 1 x 24 دبوس وصلة 1 x مروحة تبريد وحدة المعالجة المركزية وصلة 1 x مراوح تبريد المنظومة موزع 1 x اللوحة الأمامية	Hi-Fi B85Z وصلة 4 x SATA 6 جيجابايت / الثانية وصلة 2 x SATA 3 جيجابايت / الثانية موزع 2 x ناقل متسلسل عام USB 2.0 (كل موزع يتحمل فتحتين ناقل متسلسل عام USB 2.0) موزع 1 x ناقل متسلسل عام USB 3.0 (كل موزع يتحمل فتحتين ناقل متسلسل عام USB 3.0) وصلة للطاقة 1 x 4 دبائيس وصلة للطاقة 1 x 24 دبوس وصلة 1 x مروحة تبريد وحدة المعالجة المركزية
	المداخل والمخارج الداخلية

Hi-Fi B85Z & Hi-Fi H81Z

المواصفات	
وصلة 1 x مراوح تبريد المنظومة	موزع 1 x الصوت الأمامي
موزع 1 x اللوحة الأمامية	موزع 1 x سيموس مباشر
موزع 1 x الصوت الأمامي	موزع 1 x فتحة تسلسلية
موزع 1 x سيموس مباشر	وصلة 1 x خارجية S/PDIF سوني فيليبس الواجهة الرقمية
موزع 1 x فتحة تسلسلية	
وصلة 1 x خارجية S/PDIF سوني فيليبس الواجهة الرقمية	
عامل شكل مدد التكنولوجيا المتقدمة MICROATX • 226 مم x 174 مم	عامل الشكل
ويندوز 7 / ويندوز 8 / ويندوز 8.1	أنظمة التشغيل المدعومة
بيوستار BIOSTAR تحتفظ بحق إضافة أو إزالة الدعم لأي نظام تشغيل مع أو بدون أنظار.	

French

Spécifications		
Support Unité Centrale	Socket 1150 Processeurs Intel® Core i7 / i5 / i3 / Pentium / Celeron Enveloppe thermique Unité Centrale maximum : 95Watt * Veuillez vous reporter à www.biostar.com.tw pour la liste des supports modèles d'Unité Centrale.	
Jeu de puces	INTEL® B85: Hi-Fi B85Z INTEL® H81: Hi-Fi H81Z	
Mémoire	Supporte mémoire DDR3 double canal 1066/ 1333/ 1600 Banc de mémoire 2 x DDR3 DIMM, Supporte max. jusqu'à une mémoire de 16 GB Chaque module DIMM supporte module DDR3 non-ECC 512MB/ 1/ 2/ 4/ 8 GB * Veuillez vous reporter à www.biostar.com.tw pour la liste des soutien de la mémoire.	
Stockage	INTEL® B85, Supporte SRT Connecteur 4 x SATA 6Gb/s Connecteur 2 x SATA 3Gb/s	INTEL® H81, Supporte SRT Connecteur 2 x SATA 6Gb/s Connecteur 2 x SATA 3Gb/s
Réseau local	Realtek RTL 8111GR, 10/ 100/ 1000 Mb/s auto négociation, capacité bidirectionnelle à l'alternat / bidirectionnelle simultanée	
Codec audio	ALC892, Canaux 7.1, écoute audio de haute définition, Biostar Hi-Fi	
USB	INTEL® B85 Port 4x USB 3.0 (2 sur les I/O arrières et 2 en interne) Port 8x USB 2.0 (4 sur les I/O arrières et 4 en interne) INTEL® H81 Port 2x USB 3.0 (2 sur les I/O arrières) Port 8x USB 2.0 (4 sur les I/O arrières et 4 en interne)	
Connecteur d'extension	2x PCIe 2.0 x1 Fente 1x PCIe 3.0 x16 Fente (x16), Hi-Fi B85Z 1x PCIe 2.0 x16 Fente (x16), Hi-Fi H81Z	
I/O arrières	1x PS/2 Clavier 1x PS/2 Souris 1x Port VGA 1x Port DVI 1x port LAN 4x Port USB 2.0 2x Port USB 3.0 3x entrées audio	
I/O en interne	Hi-Fi B85Z 4x Connecteur SATA 6.0Gb/s 2x Connecteur SATA 3.0Gb/s 2x embases USB 2.0 (chaque embase supporte 2 Ports USB 2.0) 1x embases USB 3.0 (chaque embase supporte 2 Ports USB 3.0) 1x 4-Broche de carte 1x 24-Broche de carte 1x Connecteur ventilateur unité centrale 1x Connecteur ventilateur système	Hi-Fi H81Z 2x Connecteur SATA 6.0Gb/s 2x Connecteur SATA 3.0Gb/s 2x embases USB 2.0 (chaque embase supporte 2 Ports USB 2.0) 1x 4-Broche de carte 1x 24-Broche de carte 1x Connecteur ventilateur unité centrale 1x Connecteur ventilateur système 1x Fiche panneau avant 1x Fiche audio avant

Hi-Fi B85Z & Hi-Fi H81Z

Spécifications	
	1x Fiche panneau avant 1x Fiche audio avant 1x Fiche mémoire CMOS vide 1x Embase port série 1x Connecteur sortie S/PDIF
	1x Fiche mémoire CMOS vide 1x Embase port série 1x Connecteur sortie S/PDIF
Facteur d'encombrement	Facteur d'encombrement MICROATX , 226 mm x 174 mm
Support SE	Windows 7/ 8/ 8.1, Biostar se réserve le droit d'ajouter ou d'enlever le support pour toute SE avec ou sans préavis.

German

Spezifikationen		
CPU-Unterstützung	Anschluss-1150 für Intel® Core i7 / i5 / i3 / Pentium / Celeron Prozessor Maximale CPU TDP (Thermal Design Power): 95 Watt * Bitte konsultieren Sie www.biostar.com.tw für CPU-Unterstützungsliste	
Chipset	INTEL® B85: Hi-Fi B85Z INTEL® H81: Hi-Fi H81Z	
Festplattenspeicher	Unterstützt zweikanaliges DDR3 1066/ 1333/ 1600 2 x DDR3 DIMM-SpeicherSlot, Max. Unterstützung bis zu 16 GB-Speicher Jedes DIMM unterstützt nicht-ECC 512MB/ 1/ 2/ 4/ 8 GB DDR3-Module * Bitte konsultieren Sie www.biostar.com.tw für Speicherunterstützung Liste.	
Arbeitsspeicher	INTEL® B85, Unterstützt AHCI 4x SATA 6Gb-Verbindung 2x SATA 3Gb-Verbindung	INTEL® H81, Unterstützt AHCI 2x SATA 6Gb-Verbindung 2x SATA 3Gb-Verbindung
LAN	Realtek RTL 8111GR, 10/ 100/ 1000 Mb Auto-Negotiation, Halb- / Voll-Duplex-fähig	
Audio-Codec	ALC892, 7.1 Kanäle, HD-Audio, Biostar Hi-Fi	
USB	INTEL® B85 4x USB 3.0-Port (2 hintere I/Os und 2 via interne Header) 8x USB 2.0-Port (4 hintere I/Os und 4 via interne Header) INTEL® H81 2x USB 3.0-Port (2 hintere I/Os) 8x USB 2.0-Port (4 hintere I/Os und 4 via interne Header)	
Erweiterungsanschlüsse	2x PCIe 2.0 x1-Slot 1x PCIe 3.0 x16-Slot (x16), Hi-Fi B85Z 1x PCIe 2.0 x16-Slot (x16), Hi-Fi H81Z	
Hintere I/Os	1x PS/2-Maus 1x PS/2-Tastatur 1x VGA-Port 1x DVI-Port 1x LAN-Port 4x USB 2.0-Port 2x USB 3.0-Port 3x Audio Jack	
Interne I/Os	Hi-Fi B85Z 4x SATA 6.0Gb/s-Verbindung 2x SATA 3.0Gb/s-Verbindung 2x USB 2.0-Header (jeder Header unterstützt 2 USB 2.0-Ports) 1x USB 3.0-Header (jeder Header unterstützt 2 USB 3.0-Ports) 1x 4-Pin-Stromverbindung 1x 24-Pin-Stromverbindung 1x CPU-Ventilatorverbindung 1x System-Ventilatorverbindung 1x Header für Frontpanel 1x Header für Frontaudio	Hi-Fi H81Z 2x SATA 6.0Gb/s-Verbindung 2x SATA 3.0Gb/s-Verbindung 2x USB 2.0-Header (jeder Header unterstützt 2 USB 2.0-Ports) 2 USB 2.0-Ports) 1x 4-Pin-Stromverbindung 1x 24-Pin-Stromverbindung 1x CPU-Ventilatorverbindung 1x System-Ventilatorverbindung 1x Header für Frontpanel 1x Header für Frontaudio 1x Header für klares CMOS 1x Serieller Port-Header

Hi-Fi B85Z & Hi-Fi H81Z

Spezifikationen	
	1x Header für klares CMOS 1x Serieller Port-Header 1x S/PDI-Auswurfsverbindung
Formfaktor	MICROATX Formfaktor, 226 mm x 174 mm
OS-Unterstützung	Windows 7/ 8/ 8.1 Biostar reserves the right to add or remove support for any OS with or without notice.

Italian

Specificazioni		
Supporto processore	Slot 1150 per processore Intel® Core i7 / i5 / i3 / Pentium / Celeron Alimentazione di Proiezione Termico (TDP – Thermal Design Power): 95Watt * Si prega di consultare www.biostar.com.tw per la lista di supporto del processore.	
Tipo scheda	INTEL® B85: Hi-Fi B85Z INTEL® H81: Hi-Fi H81Z	
Memoria	Supporta DDR3 1066/ 1333/ 1600 Doppio Canale 2 x DDR3 DIMM Slot di Memoria Supporta fino a 16 GB Memoria Ogni DIMM supporta non-ECC 512MB/ 1/ 2/ 4/ 8 GB DDR3 moduli * Si prega di consultare www.biostar.com.tw per la lista di supporto del memoria.	
Memorizzazione	INTEL® B85, Supporta AHCI Connettore 4x SATA 6Gb/s Connettore 2x SATA 3Gb/s	INTEL® H81, Supporta AHCI Connettore 2x SATA 6Gb/s Connettore 2x SATA 3Gb/s
Catena	Realtek RTL 8111GR 10/ 100/ 1000 Mb auto negoziazione, capacita di duplex Meta / Completo	
Codec Audio	ALC892, Canali Audio di Alta Definizione 7.1, Biostar Hi-Fi	
USB	INTEL® B85 Slot 4x USB 3.0 (2 nei ingressi/ uscite posteriore e 2 da distributori interni) Slot 8x USB 2.0 (4 nei ingressi/ uscite posteriore e 4 da distributori interni) INTEL® H81 Slot 2x USB 3.0 (2 nei ingressi/ uscite posteriore) Slot 8x USB 2.0 (4 nei ingressi/ uscite posteriore e 4 da distributori interni)	
Slot di espansione	Slot 2x PCIe 2.0 x1 Slot 1x PCIe 3.0 x16 (x16), Hi-Fi B85Z Slot 1x PCIe 2.0 x16 (x16), Hi-Fi H81Z	
Ingressi/ Uscite Posteriore	Mouse 1x PS/2 Tastiera 1x PS/2 Slot 1x VGA Slot 1x DVI Slot 1x LAN Slot 4x USB 2.0 Slot 2x USB 3.0 Jack audio 3x	
Ingressi/ Uscite Interni	Hi-Fi B85Z Connettore 4x SATA 6.0Gb/s Connettore 2x SATA 3.0Gb/s Distributore 2x USB 2.0 (ogni distributore supporta 2 slot USB 2.0) Distributore 1x USB 3.0 (ogni distributore supporta 2 slot USB 3.0) Connettore con 4 pin x1 Connettore con 24 pin x1 Connettore Ventilatore processore x1 Connettore Ventilatore Sistema x1 Distributore Pannello Frontale x1	Hi-Fi H81Z Connettore 2x SATA 6.0Gb/s Connettore 2x SATA 3.0Gb/s Distributore 2x USB 2.0 (ogni distributore supporta 2 slot USB 2.0) Connettore con 4 pin x1 Connettore con 24 pin x1 Connettore Ventilatore processore x1 Connettore Ventilatore Sistema x1 Distributore Pannello Frontale x1 Distributore Audio Frontale x1 Distributore CMOS Diretto x1

Hi-Fi B85Z & Hi-Fi H81Z

Specificazioni	
	Distributore Audio Frontale x1 Distributore CMOS Diretto x1 Distributore Slot Serie x1 Connettore esterno S/PDIF x1 Distributore Slot Serie x1 Connettore esterno S/PDIF x1
Fattore di Forma	Fattore di Forma MICROATX , 226 mm x 174 mm
Supporto SO	Windows 7/ 8/ 8.1 Biostar si riserva il diritto di aggiungere o ritirare il supporto per qualsiasi SO con o senza preavviso.

Hi-Fi B85Z & Hi-Fi H81Z

仕様	
	1x システム ファン コネクタ 1x フロント パネル ヘッダー 1x フロント オーディオ ヘッダー 1x クリア CMOS ヘッダー 1x シリアル ポート ヘッダー 1x S/PDIF アウト コネクタ
	1x フロント オーディオ ヘッダー 1x クリア CMOS ヘッダー 1x シリアル ポート ヘッダー 1x S/PDIF アウト コネクタ
フォーム ファクタ	MICROATX フォーム ファクタ、226 mm x 174 mm
サポート OS	Windows 7/ 8/ 8.1 Biostar には、通知なしでサポート OS を変更する権限があります。

Polish

Specyfikacje techniczne		
Obsługa procesora	Gniazdo procesora (Socket) 1150 dla procesorów Intel® Core i7 / i5 / i3 / Pentium / Celeron Moc Wydzielanego Ciepła (TDP - Thermal Design Power): 95Watt * Proszę sprawdzić listę obsługiwanych procesorów na stronie internetowej www.biostar.com.tw	
Rodzaj płyty	INTEL® B85: Hi-Fi B85Z INTEL® H81: Hi-Fi H81Z	
Pamięć	Obsługa pamięci DDR3 1066/ 1333/ 1600 Dwukanałowa 2 x DDR3 DIMM Pamięć Gniazda procesora (Slot), Maksymalna wielkość pamięci 16 GB Każdy DIMM obsługuje jeden moduł non-ECC 512MB/ 1/ 2/ 4/ 8 GB DDR3 * Proszę sprawdzić listę obsługiwanych pamięć na stronie internetowej www.biostar.com.tw	
Przechowywanie	INTEL® B85, Obsługa AHCI Złącze 4x SATA 6Gb/s Złącze 2x SATA 3Gb/s	INTEL® H81, Obsługa AHCI Złącze 2x SATA 6Gb/s Złącze 2x SATA 3Gb/s
LAN	Układ RTL 8111GR, 10/ 100/ 1000 Mb auto negocjacja, pojemność duplex Połowe / Pełny	
Codec Audio	ALC892, Kanały Audio wysokiej Definicji 7.1, Biostar Hi-Fi	
USB	INTEL® B85 4 x złącza USB 3.0 (2 przez tylne porty wejścia/ wyjścia oraz 2 przez wewnętrzne porty) 8 x złącza USB 2.0 (4 przez tylne porty wejścia/ wyjścia oraz 4 przez wewnętrzne porty) INTEL® H81 2 x złącza USB 3.0 (2 przez tylne porty wejścia) 8 x złącza USB 2.0 (4 przez tylne porty wejścia/ wyjścia oraz 4 przez wewnętrzne porty)	
Złącza rozszerzeń	złącze 2x PCIe 2.0 x1 (Slot) złącza 1x PCIe 3.0 x16 (Slot) (x16), Hi-Fi B85Z złącza 1x PCIe 2.0 x16 (Slot) (x16), Hi-Fi H81Z	
Tylne porty wejścia/ wyjścia	Myszka 1x PS/2 Klawiatura 1x PS/2 Port 1x VGA Port 1x DVI Port 1x LAN Porty 4x USB 2.0 Porty 2x USB 3.0 Porty audio 3x	

Hi-Fi B85Z & Hi-Fi H81Z

Specyfikacje techniczne		
	Hi-Fi B85Z	Hi-Fi H81Z
	Złącza 4x SATA 6.0Gb/s	Złącza 2x SATA 6.0Gb/s
	Złącza 2x SATA 3.0Gb/s	Złącza 2x SATA 3.0Gb/s
	Złącza 2x USB 2.0 (każde złącze obsługuje dodatkowe 2 porty USB 2.0)	Złącza 2x USB 2.0 (każde złącze obsługuje dodatkowe 2 porty USB 2.0)
	Złącza 1x USB 3.0 (każde złącze obsługuje dodatkowe 2 porty USB 3.0)	Złącza 4 pionowe x 1
Wewnętrzne porty wejścia/ wyjścia	Złącza 4 pionowe x 1	Złącza 24 pionowe x 1
	Złącza 24 pionowe x 1	Złącze wentylatora CPU x 1
	Złącze wentylatora CPU x 1	Złącze wentylatora obudowy x 1
	Złącze wentylatora obudowy x 1	Złącze przedniego panelu x1
	Złącze przedniego panelu x1	Złącze audio przedniego panelu x1
	Złącze audio przedniego panelu x1	Złącze bezpośrednie CMOS x1
	Złącze bezpośrednie CMOS x1	Port szeregowy x1
	Port szeregowy x1	Port zewnętrzny S/PDIF x1
	Port zewnętrzny S/PDIF x1	
Obudowa	Obudowa MICROATX , 226 mm x 174 mm	
Obsługa OS	Windows 7/ 8/ 8.1 Biostar zastrzega sobie prawo do dodania lub wycofania obsługi dla OS, z wypowiedzeniem lub bez wypowiedzenia.	

Portuguese

Especificações		
Suporte Processador	Porta 1150 para processador Intel® Core i7 / i5 / i3 / Pentium / Celeron Alimentação de Design Térmico (TDP – Thermal Design Power): 95Watt * Por favor consulte www.biostar.com.tw para obter uma lista de suporte do processador.	
Tipo Placa Mãe	INTEL® B85: Hi-Fi B85Z INTEL® H81: Hi-Fi H81Z	
Memória	Suporta DDR3 1066/ 1333/ 1600 Canal Duplo 2 x DDR3 DIMM Slot de memória Suporta até 16 GB Memória Cada DIMM suporta non-ECC 512MB/ 1/ 2/ 4/ 8 GB DDR3 módulo * Por favor consulte www.biostar.com.tw para obter uma lista de suporte do memória.	
Armazenamento	INTEL® B85, Suporta AHCI Conector 4x SATA 6Gb/s Conector 2x SATA 3Gb/s	INTEL® H81, Suporta AHCI Conector 2x SATA 6Gb/s Conector 2x SATA 3Gb/s
LAN	Realtek RTL 8111GR 10/ 100/ 1000 Mb auto negociação, capacidade duplex Metade / Cheio	
Codec de Audio	ALC892, Canais de Áudio de Alta Definição 7.1, Biostar Hi-Fi	
USB	INTEL® B85 Porta 4x USB 3.0 (2 nas entradas/saídas traseiras e 2 pelos Dispositivos internos) Porta 8x USB 2.0 (4 nas entradas/saídas traseiras e 4 pelos Dispositivos internos) INTEL® H81 Porta 2x USB 3.0 (2 nas entradas/saídas traseiras) Porta 8x USB 2.0 (4 nas entradas/saídas traseiras e 4 pelos Dispositivos internos)	
Slots de expansão	Porta 2x PCIe 2.0 x1 Porta 1x PCIe 3.0 x16 (x16), Hi-Fi B85Z Porta 1x PCIe 2.0 x16 (x16), Hi-Fi H81Z	
Entradas/Saídas no painel traseiro	Mouse 1x PS/2 Teclado 1x PS/2 Porta 1x VGA Porta 1x DVI Porta 1x LAN Porta 4x USB 2.0 Porta 2x USB 3.0 Soquete audio 3x	
Conectores na placa	Hi-Fi B85Z Conector 4x SATA 6.0Gb/s Conector 2x SATA 3.0Gb/s Dispositivo 2x USB 2.0 (cada Dispositivo suporta 2 portas USB 2.0) Dispositivo 1x USB 3.0 (cada Dispositivo suporta 2 portas USB 3.0) Conector de 4 pinos x1 Conector de 24 pinos x1 Conector de Ventoinha processador x1 Conector de Ventoinha Sistema x1	Hi-Fi H81Z Conector 2x SATA 6.0Gb/s Conector 2x SATA 3.0Gb/s Dispositivo 2x USB 2.0 (cada Dispositivo suporta 2 portas USB 2.0) Conector de 4 pinos x1 Conector de 24 pinos x1 Conector de Ventoinha processador x1 Conector de Ventoinha Sistema x1 Dispositivo Painel Frontal x1 Dispositivo de Audio Frontal x1

Hi-Fi B85Z & Hi-Fi H81Z

Especificações	
	Dispositivo Painel Frontal x1 Dispositivo de Audio Frontal x1 Dispositivo CMOS Direct x1 Dispositivo Porta Série x1 Conector Externo S/PDIF x1 Dispositivo CMOS Direct x1 Dispositivo Porta Série x1 Conector Externo S/PDIF x1
Fator de Fôrma	Fator de Fôrma MICROATX , 226 mm x 174 mm
Suporte OS	Windows 7/ 8/ 8.1 Biostar reserva seu direito de adicionar ou retirar o suporte para qualquer OS com ou sem notificação.

Russian

Спецификации	
Поддержка центрального процессора	Сокет 1150 для процессоров Intel® Core i7 / i5 / i3 / Pentium / Celeron Максимальный термopakет центрального процессора (TDP): 95 ватт * Перечень поддержки центрального процессора смотрите на www.biosstar.com.tw .
Набор микросхем	INTEL® B85: Hi-Fi B85Z INTEL® H81: Hi-Fi H81Z
Память	Поддерживает двухканальный 1066/ 1333/ 1600 2 гнезда платы памяти DDR3 DIMM, максимальная память до 16 Гб Каждый модуль DIMM поддерживает модуль не-ECC 512 Мб/ 1/ 2/ 4/ 8 Гб DDR3 * Перечень поддержки памяти смотрите на www.biosstar.com.tw .
Накопитель	INTEL® B85, Поддерживает AHCI Соединитель 4x SATA 6 Гб/с Соединитель 2x SATA 3 Гб/с INTEL® H81, Поддерживает AHCI Соединитель 2x SATA 6 Гб/с Соединитель 2x SATA 3 Гб/с
Локальная сеть	Realtek RTL 8111GR Автосогласование 10/ 100/ 1000 Мб/с, работает в полно/полудуплексном режиме
Аудиокодек	ALC892, Каналы 7.1, высококачественное аудио, Biostar Hi-Fi
USB	INTEL® B85 4 порта USB 3.0 (2 сзади ввода-вывода и 2 через внутренние контакты) 8 порта USB 2.0 (4 сзади ввода-вывода и 4 через внутренние контакты) INTEL® H81 2 порта USB 3.0 (2 сзади ввода-вывода) 8 порта USB 2.0 (4 сзади ввода-вывода и 4 через внутренние контакты)
Гнезда расшир.	2x PCIe 2.0 x1 гнездо 1x PCIe 3.0 x16 гнездо (x16), Hi-Fi B85Z 1x PCIe 2.0 x16 гнездо (x16), Hi-Fi H81Z
Задняя плата ввода-вывода	1 мышь PS/2 1 клавиатура PS/2 1 порт VGA 1 порт DVI 1 порт локальной сети 4 порта USB 2.0 2 порта USB 3.0 3 гнезд для подключения наушников
Внутр. Плата ввода-вывода	Hi-Fi B85Z Соединитель 4x SATA 6 Гб/с Соединитель 2x SATA 3 Гб/с 2 контакта USB 2.0 (каждый контакт поддерживает 2 порта USB 2.0) 1 контакта USB 3.0 (каждый контакт поддерживает 2 порта USB 3.0) 1 4-выводный разъем питания 1 24-выводный разъем питания 1 разъем вентилятора ЦП 1 разъем вентилятора системы Hi-Fi H81Z Соединитель 2x SATA 6 Гб/с Соединитель 2x SATA 3 Гб/с 2 контакта USB 2.0 (каждый контакт поддерживает 2 порта USB 2.0) 1 4-выводный разъем питания 1 24-выводный разъем питания 1 разъем вентилятора ЦП 1 контакт передней панели 1 контакт передней аудиопанели

Hi-Fi B85Z & Hi-Fi H81Z

Спецификации	
	1 контакт передней панели 1 контакт передней аудиопанели 1 контакт микросхемы Clear CMOS 1 контакт последовательного порта 1 соединитель S/PDIF-Out
	1 контакт микросхемы Clear CMOS 1 контакт последовательного порта 1 соединитель S/PDIF-Out
Конструктив	Форм-фактор MICROATX , 226 мм x 174 мм
Поддержка ОС	Windows 7/ 8/ 8.1 Biostar оставляет за собой право добавлять или удалять поддержку любой ОС, с уведомлением или без.

Spanish

Especificaciones		
Compatibilidad con el procesador	Ranura 1150 para procesador Intel® Core i7 / i5 / i3 / Pentium / Celeron Alimentación de Proyección Térmica (TDP – Thermal Design Power): 95Watt *Por favor consultar con www.biostar.com.tw para la lista de compatibilidad con el procesador.	
Tipo de Placa	INTEL® B85: Hi-Fi B85Z INTEL® H81: Hi-Fi H81Z	
Memoria	Soporta DDR3 1066/ 1333/ 1600 Doble Canal 2x DDR3 DIMM Ranura de memoria Soporta hasta 16 GB Memoria Cada DIMM soporta un modulo non-ECC 512MB/ 1/ 2/ 4/ 8 GB DDR3 *Por favor consultar con www.biostar.com.tw para la lista de compatibilidad con el memoria.	
Almacenamiento de información	INTEL® B85, Soporta AHCI Conector 4x SATA 6Gb/s Conector 2x SATA 3Gb/s	INTEL® H81, Soporta AHCI Conector 2x SATA 6Gb/s Conector 2x SATA 3Gb/s
LAN	Realtek RTL 8111GR 10/ 100/ 1000 Mb/s auto negociación, capacidad dúplex Mitad/Completo	
Códec Audio	ALC892, Canales Audio de Alta Definición 7.1, Biostar Hi-Fi	
USB	INTEL® B85 Ranura 4x USB 3.0 (2 en las entrada/salidas posteriores y 2 por los distribuidores internos) Ranura 8x USB 2.0 (4 en las entrada/salidas posteriores y 4 por los distribuidores internos) INTEL® H81 Ranura 2x USB 3.0 (2 en las entrada/salidas posteriores) Ranura 8x USB 2.0 (4 en las entrada/salidas posteriores y 4 por los distribuidores internos)	
Ranuras de Extinción	Ranura 2x PCIe 2.0 x1 Ranura 1x PCIe 3.0 x16 (x16), Hi-Fi B85Z Ranura 1x PCIe 2.0 x16 (x16), Hi-Fi H81Z	
Panel trasero de E/S	Ratón 1x PS/2 Teclado 1x PS/2 Ranura 1x VGA Ranura 1x DVI Ranura 1x LAN Ranura 4x USB 2.0 Ranura 2x USB 3.0 Socket audio 3x	

Hi-Fi B85Z & Hi-Fi H81Z

Especificaciones																													
	<table border="0"> <tr> <td style="vertical-align: top;">Hi-Fi B85Z</td> <td style="vertical-align: top;">Hi-Fi H81Z</td> </tr> <tr> <td>Conector 4x SATA 6Gb's</td> <td>Conector 2x SATA 6Gb's</td> </tr> <tr> <td>Conector 2x SATA 3Gb's</td> <td>Conector 2x SATA 3Gb's</td> </tr> <tr> <td>Distribuidor 2x USB 2.0 (cada distribuidor soporta 2 ranuras USB 2.0)</td> <td>Distribuidor 2x USB 2.0 (cada distribuidor soporta 2 ranuras USB 2.0)</td> </tr> <tr> <td>Distribuidor 1x USB 3.0 (cada distribuidor soporta 2 ranuras USB 3.0)</td> <td>Conector con 4 patillas x1</td> </tr> <tr> <td>Conector con 4 patillas x1</td> <td>Conector con 24 patillas x1</td> </tr> <tr> <td>Conector con 24 patillas x1</td> <td>Conector Ventilador procesador x1</td> </tr> <tr> <td>Conector Ventilador procesador x1</td> <td>Conector Ventilador Sistema x1</td> </tr> <tr> <td>Conector Ventilador Sistema x1</td> <td>Distribuidor Panel Frontal x1</td> </tr> <tr> <td>Distribuidor Panel Frontal x1</td> <td>Distribuidor Audio Frontal x1</td> </tr> <tr> <td>Distribuidor Audio Frontal x1</td> <td>Distribuidor CMOS Directo x1</td> </tr> <tr> <td>Distribuidor CMOS Directo x1</td> <td>Distribuidor Ranura Serie x1</td> </tr> <tr> <td>Distribuidor Ranura Serie x1</td> <td>Conector Externo S/PDIF x1</td> </tr> <tr> <td>Conector Externo S/PDIF x1</td> <td></td> </tr> </table>	Hi-Fi B85Z	Hi-Fi H81Z	Conector 4x SATA 6Gb's	Conector 2x SATA 6Gb's	Conector 2x SATA 3Gb's	Conector 2x SATA 3Gb's	Distribuidor 2x USB 2.0 (cada distribuidor soporta 2 ranuras USB 2.0)	Distribuidor 2x USB 2.0 (cada distribuidor soporta 2 ranuras USB 2.0)	Distribuidor 1x USB 3.0 (cada distribuidor soporta 2 ranuras USB 3.0)	Conector con 4 patillas x1	Conector con 4 patillas x1	Conector con 24 patillas x1	Conector con 24 patillas x1	Conector Ventilador procesador x1	Conector Ventilador procesador x1	Conector Ventilador Sistema x1	Conector Ventilador Sistema x1	Distribuidor Panel Frontal x1	Distribuidor Panel Frontal x1	Distribuidor Audio Frontal x1	Distribuidor Audio Frontal x1	Distribuidor CMOS Directo x1	Distribuidor CMOS Directo x1	Distribuidor Ranura Serie x1	Distribuidor Ranura Serie x1	Conector Externo S/PDIF x1	Conector Externo S/PDIF x1	
Hi-Fi B85Z	Hi-Fi H81Z																												
Conector 4x SATA 6Gb's	Conector 2x SATA 6Gb's																												
Conector 2x SATA 3Gb's	Conector 2x SATA 3Gb's																												
Distribuidor 2x USB 2.0 (cada distribuidor soporta 2 ranuras USB 2.0)	Distribuidor 2x USB 2.0 (cada distribuidor soporta 2 ranuras USB 2.0)																												
Distribuidor 1x USB 3.0 (cada distribuidor soporta 2 ranuras USB 3.0)	Conector con 4 patillas x1																												
Conector con 4 patillas x1	Conector con 24 patillas x1																												
Conector con 24 patillas x1	Conector Ventilador procesador x1																												
Conector Ventilador procesador x1	Conector Ventilador Sistema x1																												
Conector Ventilador Sistema x1	Distribuidor Panel Frontal x1																												
Distribuidor Panel Frontal x1	Distribuidor Audio Frontal x1																												
Distribuidor Audio Frontal x1	Distribuidor CMOS Directo x1																												
Distribuidor CMOS Directo x1	Distribuidor Ranura Serie x1																												
Distribuidor Ranura Serie x1	Conector Externo S/PDIF x1																												
Conector Externo S/PDIF x1																													
Conectores en placa																													
Factor de Forma	Factor de Forma MICROATX , 226 mm x 174 mm																												
Soporte OS	Windows 7/ 8/ 8.1 Biostar reserva su derecho de añadir o retirar el soporte para cada OS con o sin notificación.																												

2014/11/27